

Desks & Tables



Activity Tables

Capture the bright excitement of childhood learning. Choose from several sizes and nine shapes: rectangular, trapezoid, round, kidney, square, horseshoe, half moon, flower, and clover. The tabletops are 1 1/4" thick with a high pressure laminate surface and 3/8" thick edge band. Its 18-gauge steel legs attach with Easy-on Bracket. Adjustable height legs come standard 15" to 24"H. Also available upon request are 21" to 30"H or 11" to 16"H legs. FOB manufacturer. Freight class 70.

QUICK Ship!
* All products on this page Quick Ship in 5 days; 20 piece maximum



WLF031-1085



WLF031-1077



WLF031-1084

*Specify color and leg size when ordering.

COLOR COMBINATIONS	
Cherry / Black	Gray Nebula / Purple
Maple / Champagne	Gray Nebula / Red
Golden Oak / Black	Gray Nebula / Persian Blue
Gray Nebula / Navy	Gray Nebula / Yellow
Gray Nebula / Forest	

Description	Color	Leg Ht.	Cat. No.	Wt.	Price (each)
24" x 36" Rec. Tabletop	Specify	Specify	WLF031-1072	42 lbs.	\$189.00
24" x 48" Rec. Tabletop	Specify	Specify	WLF031-1073	52 lbs.	\$199.00
24" x 60" Rec. Tabletop	Specify	Specify	WLF031-1074	62 lbs.	\$214.00
30" x 48" Rec. Tabletop	Specify	Specify	WLF031-1075	62 lbs.	\$214.00
30" x 60" Rec. Tabletop	Specify	Specify	WLF031-1076	75 lbs.	\$229.00
30" x 72" Rec. Tabletop	Specify	Specify	WLF031-1077	94 lbs.	\$269.00
42" Round Tabletop	Specify	Specify	WLF031-1078	60 lbs.	\$249.00
48" Round Tabletop	Specify	Specify	WLF031-1079	75 lbs.	\$279.00
60" Round Tabletop	Specify	Specify	WLF031-1080	112 lbs.	\$439.00
30 x 30 x 30 x 60 Trap Tabletop	Specify	Specify	WLF031-1081	57 lbs.	\$239.00
36" x 36" Square Tabletop	Specify	Specify	WLF031-1082	57 lbs.	\$214.00
48" x 48" Square Tabletop	Specify	Specify	WLF031-1083	92 lbs.	\$279.00
48" x 72" Kidney Tabletop	Specify	Specify	WLF031-1084	116 lbs.	\$399.00
60" x 66" Horseshoe Tabletop	Specify	Specify	WLF031-1085	130 lbs.	\$559.00
48" Clover Tabletop	Specify	Specify	WLF031-2000	70 lbs.	\$269.00
60" Flower Tabletop	Specify	Specify	WLF031-2001	104 lbs.	\$429.00
36" x 72" Half Moon Tabletop	Specify	Specify	WLF031-2002	90 lbs.	\$329.00

Nine Color Combinations:

See choices at top right.

Nine Shapes Available:

Rectangular, Trapezoid, Round, Clover, Flower, Square, Kidney, Half Moon, and Horseshoe.

SHAPES AVAILABLE	
Rectangle	Square
Trapezoid	Kidney
Round	Half Moon
Clover	Horseshoe
Flower	

Activity Tables

Designed for the heaviest school use, Correll Activity Tables feature 1-1/4" thick high-pressure tops, backer sheet, extra heavy leg assembly with oversized bracing and three screws per leg plate. Standard legs adjust from 21" to 30" in 1" increments. Short legs available from 16" to 25". Freight class 70.

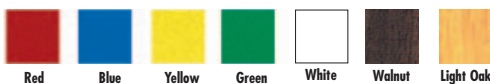


CORRELL, INC.

Description	Ht.	Color	Cat. No.	Wt.	Price (each)
24" x 48" Activity Table	21"-31"	Specify	WLF-A2448REC	53 lbs.	\$134.00
30" x 60" Activity Table	21"-31"	Specify	WLF-A3060REC	80 lbs.	\$179.00
30" x 72" Activity Table	21"-31"	Specify	WLF-A3072REC	98 lbs.	\$209.00
24" x 24" x 48" Trap	21"-31"	Specify	WLF-A2448TRP	40 lbs.	\$129.00
48" x 72" Kidney Table	21"-31"	Specify	WLF-A4872KID	113 lbs.	\$279.00
42" Round Table	21"-31"	Specify	WLF044-A42RND	61 lbs.	\$169.00



*Specify color when ordering.



Call us at 800-727-4368

Folding Tables



QUICK! Ship!
* All items on this page Quick Ship in 5 days.



***Specify color when ordering.**



Primary Color Resin Tables

Description	Ht.	Color	Cat. No.	Wt.	Price (each)
Fixed Height					
24" x 48" Table	29"	Specify	WLF044-R2448C	30 lbs.	\$119.00
30" x 60" Table	29"	Specify	WLF044-R3060C	37 lbs.	\$149.00
30" x 72" Table	29"	Specify	WLF044-R3072C	42 lbs.	\$159.00
Adjustable Height					
24" x 48" Table	22"-32"	Specify	WLF044-RA2448C	32 lbs.	\$159.00
30" x 60" Table	22"-32"	Specify	WLF044-RA3060C	39 lbs.	\$189.00
30" x 72" Table	22"-32"	Specify	WLF044-RA3072C	44 lbs.	\$199.00

Commercial Quality Blow-Molded Plastic Resin Folding Tables

With a strong steel frame and five top support tubes on back, these lightweight tables are easy to handle and are highly stain and impact resistant. The waterproof plastic top resists damage from food stains, permanent marker and paint. Available in fixed height and height adjustable (22" to 32" in one inch increments). Choose from six colors with a Black frame. 5-year limited warranty. Freight class 70. **QUICK! Ship!**



Folds compactly for storage



Mocha & Gray Granite Resin Tables

Description	Ht.	Color	Cat. No.	Wt.	Price (each)
Fixed Height					
18" x 72" Table	29"	Specify	WLF044-R1872	30 lbs.	\$139.00
24" x 48" Table	29"	Specify	WLF044-R2448	30 lbs.	\$109.00
30" x 60" Table	29"	Specify	WLF044-R3060	37 lbs.	\$134.00
30" x 72" Table	29"	Specify	WLF044-R3072	42 lbs.	\$149.00
30" x 96" Table	29"	Specify	WLF044-R3096	54 lbs.	\$189.00
Adjustable Height					
24" x 48" Table	22"-32"	Specify	WLF044-RA2448	32 lbs.	\$139.00
30" x 72" Table	22"-32"	Specify	WLF044-RA3072	44 lbs.	\$179.00
30" x 96" Table	22"-32"	Specify	WLF044-RA3096	56 lbs.	\$219.00



Commercial Quality Blow-Molded Plastic Resin Folding Chair

A comfort contoured seat and back are made from the same material as the tabletop. The oval tube frame has front and rear leg braces with double hinge bars on each leg. Chairs nest and interlock for more stable stacking. Available in Gray Granite with Black frame. One-year limited warranty. Sold in full cartons of four. Weight: 4 lbs. Freight class 125. **QUICK! Ship!**

WLF044-RC500 \$54.00

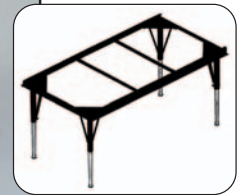


Commercial Quality Resin Activity Tables

These lightweight tables are easy to handle and are highly stain and impact resistant. Tables feature a strong steel frame, with five top support tubes on back. The waterproof plastic top resists damage from food stains, permanent marker and paint. Tables are height adjustable (21" to 30" in 1" increments). Ships direct from factory within three days of receipt of order at factory. 5-year limited warranty. Freight class 70. **QUICK! Ship!**

Description	Ht.	Color	Cat. No.	Wt.	Price (each)
24" x 48" Table	21"-30"	Specify	WLF-AR2448REC	36 lbs.	\$159.00
30" x 60" Table	21"-30"	Specify	WLF-AR3060REC	46 lbs.	\$209.00
30" x 72" Table	21"-30"	Specify	WLF-AR3072REC	52 lbs.	\$209.00
48" x 72" Kidney Tbl	21"-30"	Specify	WLF-AR4872KID	76 lbs.	\$289.00

***Specify color when ordering.**



QUICK!
Ship

* All items on this page
Quick Ship in 5 days.



5/8" Melamine Top Economy Grade Folding Tables

Heavy-duty 5/8" thick solid core top features bullnose edge molding, mar-proof plastic foot caps and lock-open legs. Available in Walnut and Medium Oak. Choose from 29" fixed height or adjustable height 22" to 32". Freight class 70. **QUICK!** Ship!

Description	Ht.	Color	Cat. No.	Wt.	Price (each)
Fixed Height Folded Table					
18" x 72"	29"	Specify	WLF044-CF1872M	41 lbs.	\$99.00
24" x 48"	29"	Specify	WLF044-CF2448M	39 lbs.	\$89.00
30" x 60"	29"	Specify	WLF044-CF3060M	53 lbs.	\$99.00
30" x 72"	29"	Specify	WLF044-CF3072M	61 lbs.	\$104.00
30" x 96"	29"	Specify	WLF044-CF3096M	80 lbs.	\$119.00
Adjustable Height Folded Table					
24" x 48"	22"-32"	Specify	WLF-CFA2448M	40 lbs.	\$119.00
30" x 60"	22"-32"	Specify	WLF-CFA3060M	54 lbs.	\$129.00
30" x 72"	22"-32"	Specify	WLF-CFA3072M	62 lbs.	\$139.00
30" x 96"	22"-32"	Specify	WLF-CFA3096M	81 lbs.	\$149.00

Preferred Grade 3/4" High Pressure Top Folding Tables

Heavy-duty 3/4" thick industrial high density particle board solid core top with high-pressure laminate top and backer sheet provides superior strength and warp resistance. With bullnose edge molding, marproof plastic foot caps, and lock-open legs. Industry Standard. Available in Walnut, Medium Oak, Dove Gray, Red, Blue, Yellow and Green. Choose from 29" fixed height or adjustable height 22" to 32". Freight class 70. **QUICK!** Ship!



Description	Ht.	Color	Cat. No.	Wt.	Price (each)
Fixed Height Folded Table					
18" x 72"	29"	Specify	WLF-CF1872PX	49 lbs.	\$134.00
24" x 48"	29"	Specify	WLF-CF2448PX	46 lbs.	\$129.00
30" x 60"	29"	Specify	WLF-CF3060PX	65 lbs.	\$144.00
30" x 72"	29"	Specify	WLF-CF3072PX	74 lbs.	\$159.00
30" x 96"	29"	Specify	WLF-CF3096PX	96 lbs.	\$189.00
60" Round	29"	Specify	WLF044-CF60PX	103 lbs.	\$199.00
Adjustable Height Folded Table					
24" x 48"	22"-32"	Specify	WLF-CFA2448PX	47 lbs.	\$159.00
30" x 60"	22"-32"	Specify	WLF-CFA3060PX	66 lbs.	\$179.00
30" x 72"	22"-32"	Specify	WLF-CFA3072PX	75 lbs.	\$199.00
30" x 96"	22"-32"	Specify	WLF-CFA3096PX	97 lbs.	\$219.00

*Specify color when ordering.

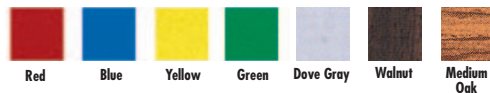


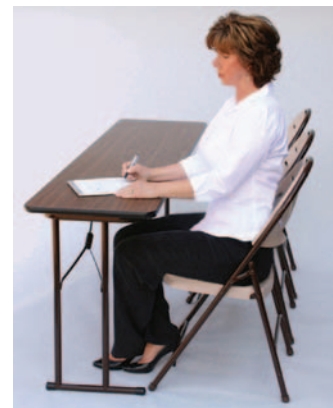
Table and Chair Trucks

Move all of your folding tables and chairs easily with these carts from Correll. Made of heavy gauge steel with 2" x 2" welded angle iron construction, trucks feature two fixed and two swivel no-mar casters and 16-gauge, 1" diameter handles. Available in Brown. Capacities are approximate. **QUICK!** Ship!

Description	Cat. No.	Wt.	Price (each)
Table Truck			
30 x 72 Flat Stack—12-16 Capacity	WLF044-T3072	58 lbs.	\$219.00
30 x 90 Flat Stack—12-16 Capacity	WLF044-T3096	62 lbs.	\$232.00
Round Edge Stack—8 Capacity	WLF044-T6060	59 lbs.	\$236.00
Chair Truck			
16-20 Chair Capacity	WLF044-C1940	33 lbs.	\$159.00

Off-Set Leg Seminar Tables

A 3/4" high-density industrial particleboard core, is equipped with high-pressure top and masonite backer sheet. Off-Set leg design and an inverted "Y" gravity lock folding mechanism allows maximum leg room. High-pressure top has a smooth writing surface, and is highly scratch and stain resistant. Tables are all 29" high. Available with Walnut top with brown frame and Medium Oak top with brown frame. Freight class 70. **QUICK!** Ship!



Description	Seats	Walnut/Brown	Med. Oak/Brown	Wt.	Price (each)
18"D x 60"L	2	WLF044-1860WAL	WLF044-1860OAK	44 lbs.	\$169.00
18"D x 72"L	3	WLF044-1872WAL	WLF044-1872OAK	51 lbs.	\$179.00
18"D x 96"L	4	WLF044-1896WAL	WLF044-1896OAK	58 lbs.	\$189.00

Multi-Purpose Tables



**Specify color when ordering.*



Adjustable T-Leg Activity Tables

These tables have value and versatility you can easily adjust to. Tops are 1 1/8" thick, 45 lb. density particleboard sealed with a laminate backer sheet for balanced construction. Long-life high pressure laminate surface available in Walnut, Teak, Birch, Light Oak and Gray Nebula and complimented by protective, Black vinyl T-molding. Solid steel adjustable legs adjust in 1" increments from 22 3/4" to 30 3/4" for maximum versatility. Reliable machine screw locking device assures secure adjustment. Black enameled upper portion with chrome lower section give a sleek, modern appearance. Full length stretcher ties legs together and adds support to table top. Adjustable leveling glides allow use on any flooring. Freight class 70.

Type	Size	Cat. No.	Wt.	Price (each)
Rectangular	36"W x 20"D	WLF037-1090	50 lbs.	\$139.00
Rectangular	48"W x 24"D	WLF037-1091	65 lbs.	\$149.00
Trapezoid	30" x 30" x 60"	WLF037-1092	65 lbs.	\$179.00
Rectangular	60"W x 30"D	WLF037-1093	85 lbs.	\$199.00
Rectangular	72"W x 30"D	WLF037-1094	100 lbs.	\$209.00
Rectangular	72"W x 36"D	WLF037-1095	115 lbs.	\$229.00



K5 Planner Table

A solid steel framed utility table has tops that are heavy 45 lb. 1 1/8" thick, high density particleboard covered in a high pressure, scratch resistant laminate, with a backer sheet for balanced construction and durability. Legs are adjustable from 23 1/2" to 33 1/2" in one-inch increments. Four adjustable foot glides are standard. Super strong frame and dual bolt legs provide exceptional rigidity, durability and longer useful life. Available with Grey Nebula top, with extra thick Navy vinyl T-molding, matching navy legs or Light Oak top with extra thick Black vinyl T-molding, matching black legs. Freight class 70.



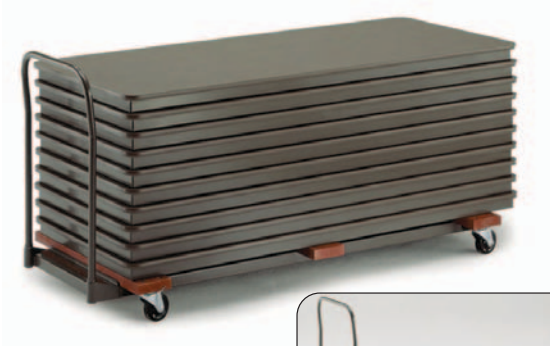
Classroom Activity Tables

Heavy-duty construction and versatility invite continuous use. Tops are 1 1/8" thick, 45 lb. density particleboard sealed with a laminate backer sheet for balanced construction. Long-life high pressure laminate surface available in Walnut, Teak, Birch, Light Oak, Gray Nebula and Blue—and complimented by protective, color-coordinated vinyl T-molding. All tables 72" or longer are equipped with stabilizing factor y-installed steel stretchers. Tapered tubular steel, standard legs are adjustable from 20 1/2" to 29 1/2"H in 1" increments. Factory-installed quick mounts facilitate secure and easy leg mounting. Specify color when ordering. Freight class 70.

Type	Size	Cat. No.	Wt.	Price (each)
Rectangle-Grey	24"W x 48"D	WLF037-K52448G	80 lbs.	\$249.00
Rectangle-Navy	24"W x 48"D	WLF037-K52448N	80 lbs.	\$249.00
Rectangle-Grey	30"W x 48"D	WLF037-K53048G	95 lbs.	\$259.00
Rectangle-Navy	30"W x 48"D	WLF037-K53048N	95 lbs.	\$259.00
Rectangle-Grey	30"W x 60"D	WLF037-K53060G	110 lbs.	\$289.00
Rectangle-Navy	30"W x 60"D	WLF037-K53060N	110 lbs.	\$289.00
Rectangle-Grey	30"W x 72"D	WLF037-K53072G	125 lbs.	\$319.00
Rectangle-Navy	30"W x 72"D	WLF037-K53072N	125 lbs.	\$319.00
Rectangle-Grey	36"W x 72"D	WLF037-K53672G	145 lbs.	\$339.00
Rectangle-Navy	36"W x 72"D	WLF037-K53672N	145 lbs.	\$339.00
Round - Grey	48" Round	WLF037-K548CRG	90 lbs.	\$299.00
Round - Navy	48" Round	WLF037-K548CRN	90 lbs.	\$299.00

Type	Size	Cat. No.	Wt.	Price (each)
Rectangular	48"W x 24"D	WLF037-1070	55 lbs.	\$119.00
Rectangular	60"W x 30"D	WLF037-1071	80 lbs.	\$139.00
Rectangular	72"W x 30"D	WLF037-1072	95 lbs.	\$159.00
Rectangular	72"W x 36"D	WLF037-2001	110 lbs.	\$189.00
Square	42" x 42"	WLF037-1073	70 lbs.	\$139.00
Circle	42" Round	WLF037-1074	65 lbs.	\$139.00
Circle	60" Round	WLF037-1075	80 lbs.	\$209.00
Half Round	24" x 48"	WLF037-1076	45 lbs.	\$99.00
Trapezoid	24" x 24" x 48"	WLF037-1077	45 lbs.	\$99.00
Trapezoid	30" x 30" x 60"	WLF037-1078	55 lbs.	\$129.00
Kidney	48" x 72"	WLF037-1079	115 lbs.	\$209.00

Folding Table Caddies



WLF022-TEC




WLF022-RTCHB



WLF022-RTC

Standard Table Caddies

Standard-duty table caddies are designed for use on smooth floors. Caddies feature 4" dia. x 1 1/4" W hard rubber wheels with swivel stem casters mounted to a heavy gauge welded steel frame. Side rails are covered with neoprene rubber to protect tables. Freight class 70. 


Description	Table Capacity	Wt.	Cat. No.	Price (each)
60"-72" Round Table Caddy	8	70 lbs.	WLF022-RTCHB	\$419.00
48"-60" Round Table Caddy	8	65 lbs.	WLF022-RTC	\$379.00
Folding Table Caddy	10-12	64 lbs.	WLF022-TC72	\$299.00
Folding Table Caddy	10-12	78 lbs.	WLF022-TC96	\$309.00
Rectangle/Serpentine Table Caddy	8	64 lbs.	WLF022-TEC	\$379.00



WLF022-TC72



Heavy-Duty Table Caddies

Heavy-duty table caddies are designed to roll long distances on concrete, tile or carpeted floors. Caddies feature 6" dia. x 1 3/8" wide wheels with roller bearing axle and swivel plate casters mounted to a heavy gauge welded steel frame. Crossbeams are carpeted and side rails are covered with neoprene rubber to protect tables. Freight class 70. 

Description	Table Capacity	Wt.	Cat. No.	Price (each)
Heavy-Duty Round Table Caddy	8	81 lbs.	WLF022-HRTC	\$679.00
Heavy-Duty Rectangle Table Caddy	8	75 lbs.	WLF022-HTEC	\$639.00
Heavy-Duty Folding Table Caddy	10-12	82 lbs.	WLF022-HTC72	\$639.00
74"W x 31"D x 42"H				
Heavy-Duty Folding Table Caddy	10-12	93 lbs.	WLF022-HTC96	\$649.00
97"W x 31"D x 42"H				



WLF022-HTC72



WLF022-HRTC